



D20912 9 – 12 GHz 2-Way Power Divider

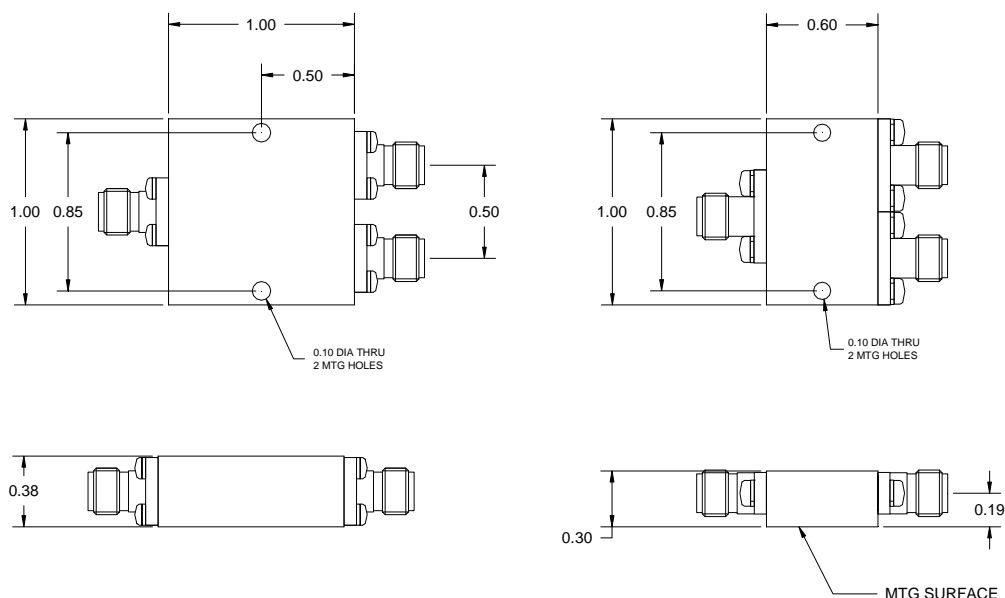
FEATURES

- ❖ Low Insertion Loss
- ❖ Low VSWR
- ❖ High Isolation
- ❖ Excellent Amplitude & Phase Tracking

SPECIFICATIONS

9 – 12 GHz 2-Way Power Divider	
Model Number	D20912
Frequency Range	9 – 12 GHz
Insertion Loss	0.50 dB Typ., 0.6 dB Max.
Isolation	27 dB Typ., 21 dB Min.
Input VSWR	1.15:1 Typ., 1.25:1 Max.
Output VSWR	1.10:1 Typ., 1.20:1 Max.
Amplitude Balance	0.03 dB rms Typ., 0.06 dB rms Max.
Phase Balance	0.4° rms Typ., 1° rms Max.
Power Handling As Divider	30 W CW
Connector Type	SMA Female
Operating Temperature	-55 °C To +125 °C

Note 1. Insertion loss refers to the sum of output power to the input power
 Note 2. Amplitude and phase balance are RMS value of all the paths at any frequency
 Note 3. Power handling is under the condition that all outputs are connected to the loads with 1.25:1 or better VSWR



Standard outline

Small Outline