



# DG0422 4.0 – 22.0 GHz Zero Bias Detector

## FEATURES

- ❖ Excellent Sensitivity
- ❖ Excellent Flatness vs. Frequency
- ❖ Mounting Hole Option
- ❖ Wide Frequency Range

## SPECIFICATIONS

<b>4.0 – 22.0 GHz Zero Bias Detector</b>	
Model Number	DG0422
Frequency Range	4.0 – 22.0 GHz
Sensitivity	1300 mV/mW
Flatness vs. Frequency	± 1.5 dB
TSS	-47 dBm
Maximum Input Power	+20 dBm
Connector Type	SMA Female
Impedance	50Ω Nom.

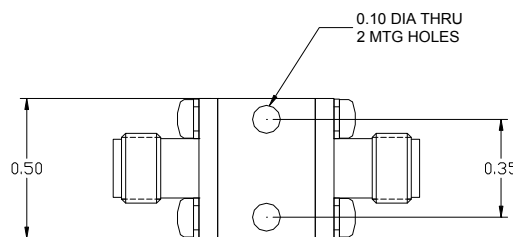
Note 1. All the detectors are negative polarities. Positive polarities is available on request

Note 2. The sensitivity is measured into an open circuit load (>10k Ohm)

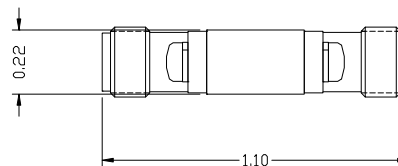
Note 3. Other frequency range available on request

Note 4. Operating Temperature: -55 °C To +125 °C

Storage Temperature: -65 °C To +125 °C



Outline 1



Outline 2