



DG1218 12.0 – 18.0 GHz Zero Bias Detector

FEATURES

- ❖ Excellent Sensitivity
- ❖ Excellent Flatness vs. Frequency
- ❖ Mounting Hole Option
- ❖ Wide Frequency Range

SPECIFICATIONS

12.0 – 18.0 GHz Zero Bias Detector	
Model Number	DG1218
Frequency Range	12.0 – 18.0 GHz
Sensitivity	1500 mV/mW
Flatness vs. Frequency	± 1.5 dB
TSS	-50 dBm
Maximum Input Power	+20 dBm
Connector Type	SMA Female
Impedance	50 Ω Nom.

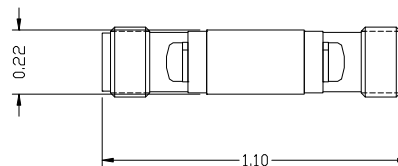
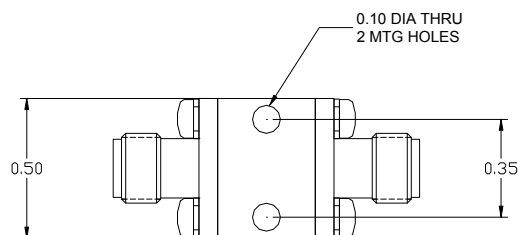
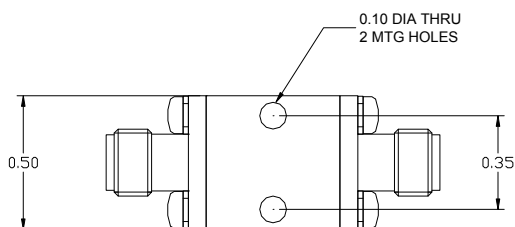
Note 1. All the detectors are negative polarities. Positive polarities is available on request

Note 2. The sensitivity is measured into an open circuit load (>10k Ohm)

Note 3. Other frequency range available on request

Note 4. Operating Temperature: -55 °C To +125 °C

Storage Temperature: -65 °C To +125 °C



Outline 1

Outline 2