



DG1227 12.0 – 27.0 GHz Zero Bias Detector

FEATURES

- ❖ Excellent Sensitivity
- ❖ Excellent Flatness vs. Frequency
- ❖ Mounting Hole Option
- ❖ Wide Frequency Range

SPECIFICATIONS

| 12.0 – 27.0 GHz Zero Bias Detector | |
|------------------------------------|------------------|
| Model Number | DG1227 |
| Frequency Range | 12.0 – 27.0 GHz |
| Sensitivity | 1300 mV/mW |
| Flatness vs. Frequency | ± 1.6 dB |
| TSS | -45 dBm |
| Maximum Input Power | +20 dBm |
| Connector Type | SMA Female |
| Impedance | 50 Ω Nom. |

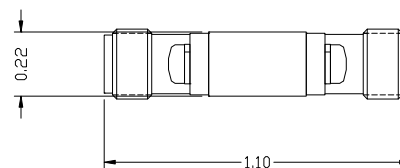
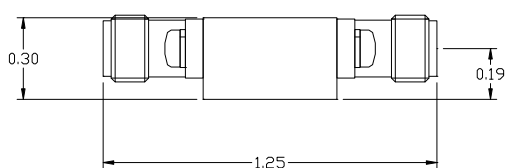
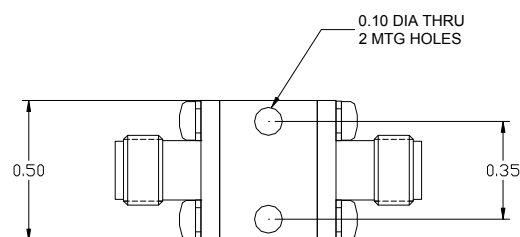
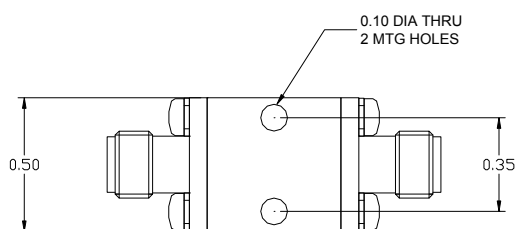
Note 1. All the detectors are negative polarities. Positive polarities is available on request

Note 2. The sensitivity is measured into an open circuit load (>10k Ohm)

Note 3. Other frequency range available on request

Note 4. Operating Temperature: -55 °C To +125 °C

Storage Temperature: -65 °C To +125 °C



Outline 1

Outline 2