



DG5002 0.5 – 2.0 GHz Zero Bias Detector

FEATURES

- ❖ Excellent Sensitivity
- ❖ Excellent Flatness vs. Frequency
- ❖ Mounting Hole Option
- ❖ Wide Frequency Range

SPECIFICATIONS

0.5 – 2.0 GHz Zero Bias Detector	
Model Number	DG5002
Frequency Range	0.5 – 2.0 GHz
Sensitivity	1800 mV/mW
Flatness vs. Frequency	± 0.3 dB
TSS	-50 dBm
Maximum Input Power	+20 dBm
Connector Type	SMA Female
Impedance	50 Ω Nom.

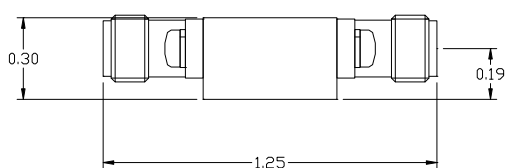
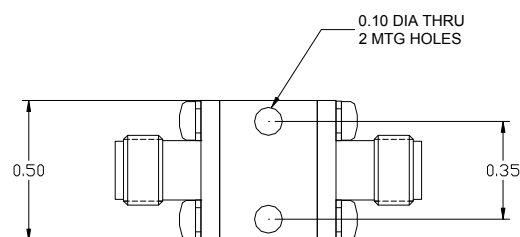
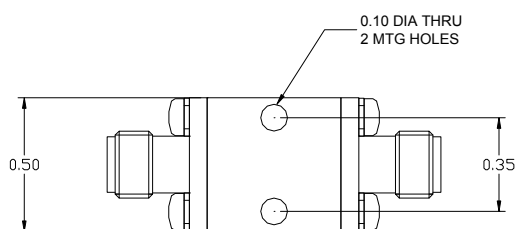
Note 1. All the detectors are negative polarities. Positive polarities is available on request

Note 2. The sensitivity is measured into an open circuit load (>10k Ohm)

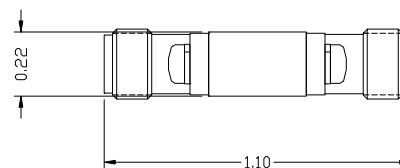
Note 3. Other frequency range available on request

Note 4. Operating Temperature: -55 °C To +125 °C

Storage Temperature: -65 °C To +125 °C



Outline 1



Outline 2