



## DM0312 3.0 – 12.0 GHz RF Matched Detector

### FEATURES

- ❖ Excellent Sensitivity
- ❖ Excellent Flatness vs. Frequency
- ❖ Mounting Hole Option
- ❖ RF Input Matched

### SPECIFICATIONS

3.0 – 12.0 GHz RF Matched Detector	
Model Number	DM0312
Frequency Range	3.0 – 12.0 GHz
Sensitivity	500 mV/mW
Flatness vs. Frequency	$\pm 1.0\text{dB}$
RF Input VSWR	1.80:1
Connector Type	SMA Female
Impedance	50 $\Omega$ Nom.

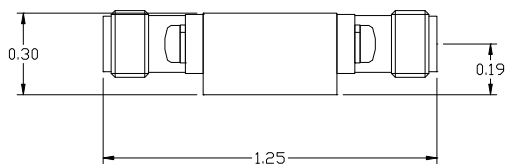
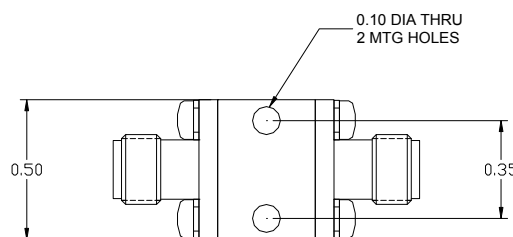
Note 1. All the detectors are negative polarities. Positive polarities is available on request

Note 2. The sensitivity is measured into an open circuit load (>10k Ohm)

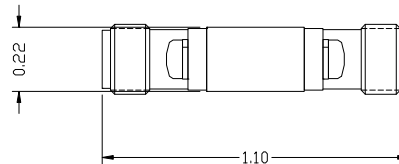
Note 3. Other frequency range available on request

Note 4. Operating Temperature: -55 °C To +125 °C

Storage Temperature: -65 °C To +125 °C



Outline 1



Outline 2