



## DM5006 50 MHz – 6.0 GHz RF Matched Detector

### FEATURES

- ❖ Excellent Sensitivity
- ❖ Excellent Flatness vs. Frequency
- ❖ Mounting Hole Option
- ❖ RF Input Matched

### SPECIFICATIONS

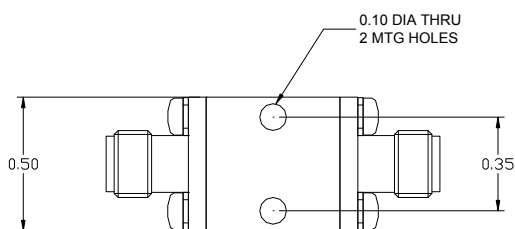
50 MHz – 6.0 GHz RF Matched Detector	
Model Number	DM5006
Frequency Range	50 MHz – 6.0 GHz
Sensitivity	600 mV/mW
Flatness vs. Frequency	$\pm 0.5$ dB
RF Input VSWR	1.28:1
Connector Type	SMA Female
Impedance	50 $\Omega$ Nom.

Note 1. All the detectors are negative polarities. Positive polarities is available on request

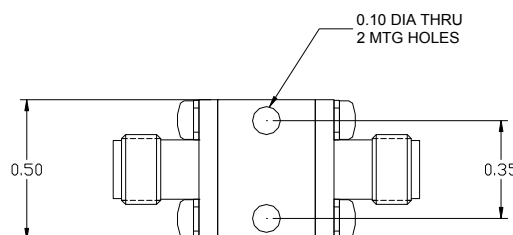
Note 2. The sensitivity is measured into an open circuit load (>10k Ohm)

Note 3. Other frequency range available on request

Note 4. Operating Temperature: -55 °C To +125 °C  
Storage Temperature: -65 °C To +125 °C



Outline 1



Outline 2