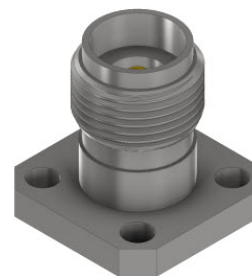




## CKF440 2.92 mm Female 4-Hole Flange Mount Connector

### FEATURES

- ❖ Excellent VSWR
- ❖ Low Insertion Loss
- ❖ Coming with 0.012x0.006 inch Pin
- ❖ Operating up to 40 GHz Frequency
- ❖ Mates with SMA and 3.5 mm connectors



### SPECIFICATIONS

2.92 mm Female 4-Hole Flange Mount Connector	
Model Number	CKF440
Frequency Range	DC – 40 GHz
Impedance	50Ω
VSWR	1.15:1 Max.
Connector Center PIN	Beryllium copper, Gold plated
Insulation	PEI
Connector Housing	Passivated Stainless Steel
Temperature	-55°C to +135°C

