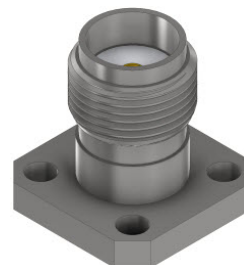




CSF427 SMA Female 4-Hole Flange Mount Connector

FEATURES

- ❖ Excellent VSWR
- ❖ Low Insertion Loss
- ❖ Coming with 0.024x0.006 inch Pin
- ❖ Operating up to 26.5 GHz Frequency
- ❖ Mates with 2.92 mm and 3.5 mm connectors



SPECIFICATIONS

SMA Female 4-Hole Flange Mount Connector	
Model Number	CSF427
Frequency Range	DC – 26.5 GHz
Impedance	50Ω
VSWR	1.15:1 Max.
Connector Center PIN	Beryllium copper, Gold plated
Insulation	PTFE
Connector Housing	Passivated Stainless Steel
Temperature	-55°C to +135°C

